

Kelly Scientific Resources can help you get the right internship. The Future Scientist Program brings the needs of students together with those of university and industry.

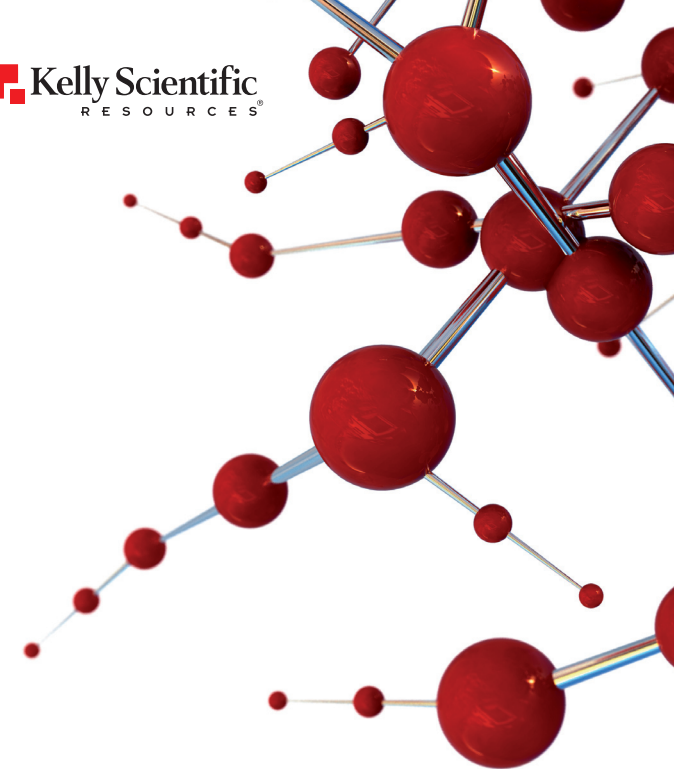
It is a nationwide scheme designed to streamline and enhance the process of placing science students in internships with local employers within their sector – either over the holidays or for an academic year.

FOR MORE DETAILS VISIT
WWW.KELLYSCIENTIFIC.COM.AU
OR CALL 1800 882 930

Kelly Scientific Resources is a specialist division of Kelly Services.



Kelly Scientific
RESOURCES

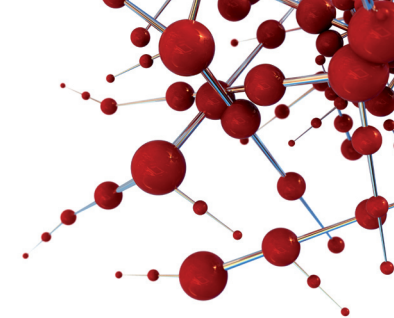


FUTURE SCIENTIST PROGRAM

Internships with great companies



KELLYSCIENTIFIC.COM.AU



THE FORMULA FOR BETTER POSITIONS, BETTER PAY AND BETTER PROSPECTS

For students, internships are a great way to learn more about industry and specific companies and earn much-needed income whilst still at university.

The right placement can give you invaluable practical experience, the chance to work with leading scientists and networking opportunities that are essential to working in the sciences today. But the benefits go far beyond the internship itself. In some cases, companies often retain their interns on a part-time basis during the academic year and you will find that your industry experience will make you more marketable following graduation.

You'll have more professional choices, be immediately productive and be far more likely to achieve a higher starting salary. What's more, because companies often offer permanent positions to students who have participated in their internship programs, there's also the possibility of a job with your preferred company after graduation.

WORKING TODAY FOR TOMORROW'S SCIENTIST

You could be the best student in your subject, but if you don't present yourself well on paper and in person you won't get the internship you want. The rules commonly applied to CV preparation aren't always appropriate when it comes to the sciences.

Kelly Scientific Resources consultants are all qualified scientists who work closely with industry and read thousands of CVs each year. They know exactly what works and what doesn't. They can also help you evaluate and improve your CV and show you how to impress with a few simple guidelines.

In certain situations Kelly Scientific Resources staff will also be available to conduct practice interviews and give you a first-hand critique of your performance and how it might be improved.

HOW TO APPLY

Applications should be made direct to your local Kelly Scientific Resources branch. In Australia, Kelly Scientific Resources has offices based in Adelaide, Brisbane, Melbourne, Perth and Sydney.

You will need to specify whether you are looking for an internship for your holiday's or for your next academic year, what subject or industry you are studying and which areas you are willing to commute to.

Your consultant will review your application and get in touch to schedule an interview with you. We suggest you also obtain a letter of recommendation from a professor or graduate student who can comment on your lab skills and academic abilities.